



smartwin

Die erste Schiebetüre der Energieeffizienzklasse phA+, besser geht's nicht.

The first sliding door in energy efficiency class
phA+, a big step forward.

Franz Freundorfer pro Passivhausfenster

Passivhausfenster – eine Erfolgsstory / Passive House Windows – a success story

- Small craft businesses have launched the Passive House Window.
- There are currently 359 certified window systems, but only nine sliding systems. Two of this nine constructions are designed as parallel sliding doors.
- In Europe, sliding elements are not suitable for the masses, because of their far too complex manufacturing and very expensive fittings.
- Particularly in Asia, the sliding element is the most common type of window opening.
- Kleine Handwerksbetriebe haben das Passivhausfenster aus der Taufe gehoben.
- Aktuell gibt es 359 zertifizierte Fenstersysteme, aber nur neun Schiebesysteme – davon sind zwei Konstruktionen als Parallelschiebetüren ausgeführt.
- In Europa sind Schiebeelemente nicht massentauglich, weil sie in der Herstellung viel zu aufwändig sind und sehr teure Beschläge aufweisen.
- In Asien ist das Scheibefenster die häufigste Fensterart

Passivhausfenster – eine Erfolgsstory / Passive House Windows – a success story

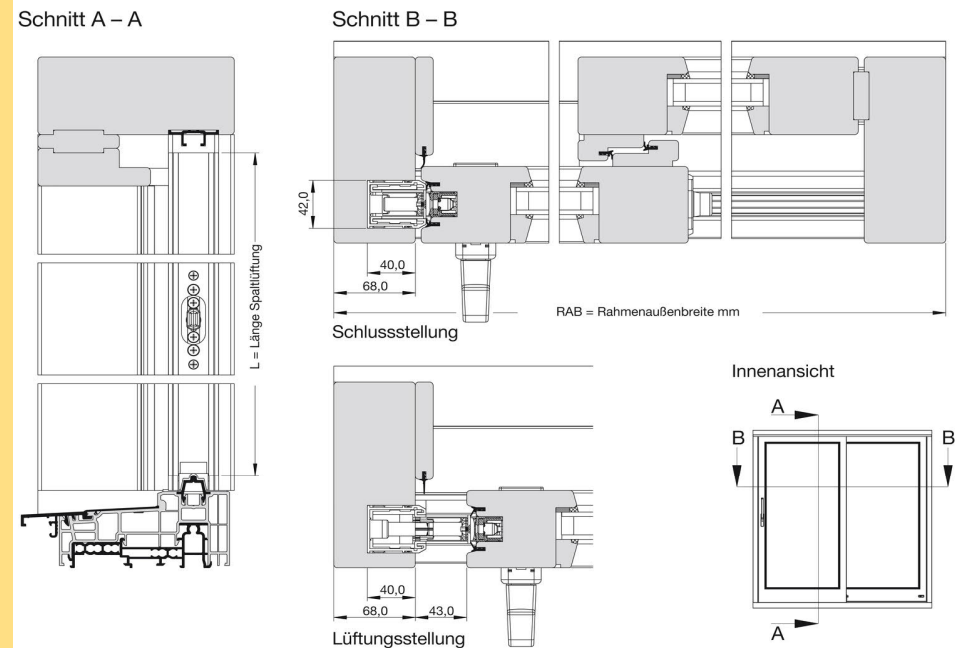
- Small craft businesses have launched the Passive House Window.
- There are currently 359 certified window systems, but only nine sliding systems. Two of this nine constructions are designed as parallel sliding doors.
- In Europe, sliding elements are not suitable for the masses, because of their far too complex manufacturing and very expensive fittings.
- Particularly in Asia, the sliding element is the most common type of window opening.



Passivhausfenster – eine Erfolgsstory / Passive House Windows – a success story

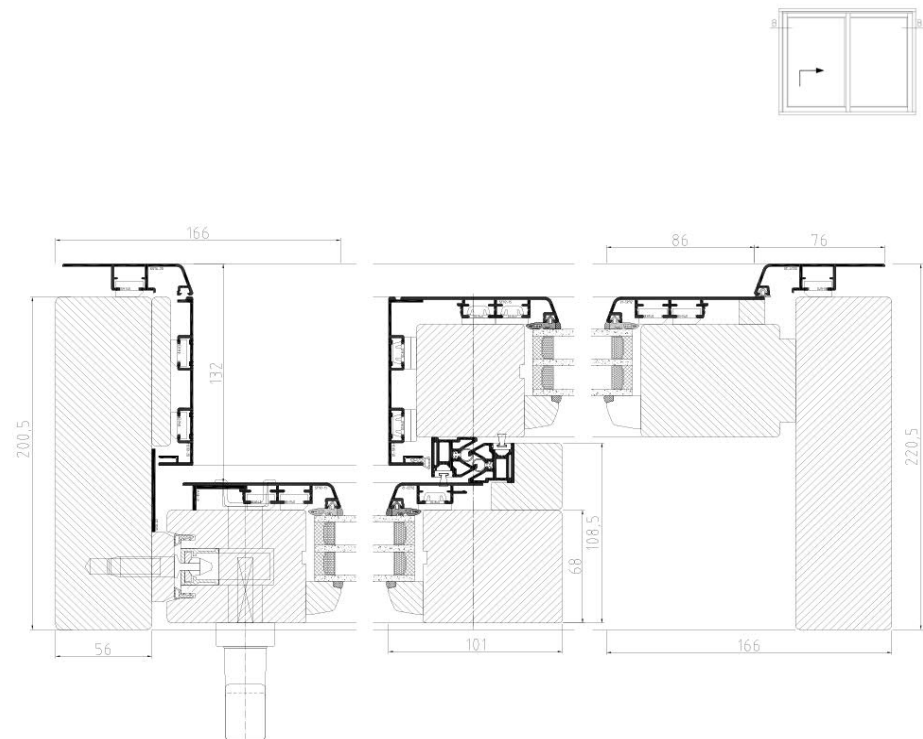
- Small craft businesses have launched the Passive House Window.
- There are currently 359 certified window systems, but only nine sliding systems. Two of this nine constructions are designed as parallel sliding doors.
- In Europe, sliding elements are not suitable for the masses, because of their far too complex manufacturing and very expensive fittings.
- Particularly in Asia, the sliding element is the most common type of window opening.

33 versch. Profile nötig + nicht luftdicht => 30 bis 40 h
Arbeitszeit pro Türe / 33 different profiles + not air-tight =>
30 to 40 h per door



Passivhausfenster – eine Erfolgsstory / Passive House Windows – a success story

- Small craft businesses have launched the Passive House Window.
- There are currently 359 certified window systems, but only nine sliding systems. Two of this nine constructions are designed as parallel sliding doors.
- In Europe, sliding elements are not suitable for the masses, because of their far too complex manufacturing and very expensive fittings.
- Particularly in Asia, the sliding element is the most common type of window opening.

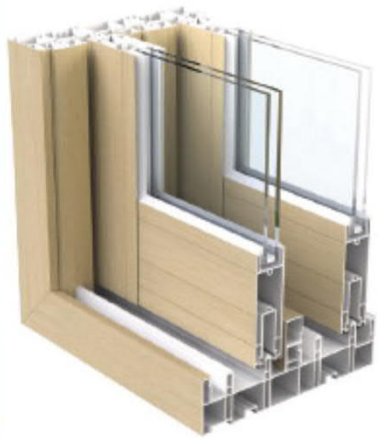


Asien braucht massentaugliche Schiebelösungen / Asia needs sliding solutions as a mass product



- Bilder aus Südkorea / Status quo South Korea
- Bürstendichtungen - und Luftdichtigkeit? / Brush gaskets and airtightness

Asien braucht massentaugliche Schiebelösungen / Asia needs sliding solutions as a mass product



중간부 보조 물막이 턱

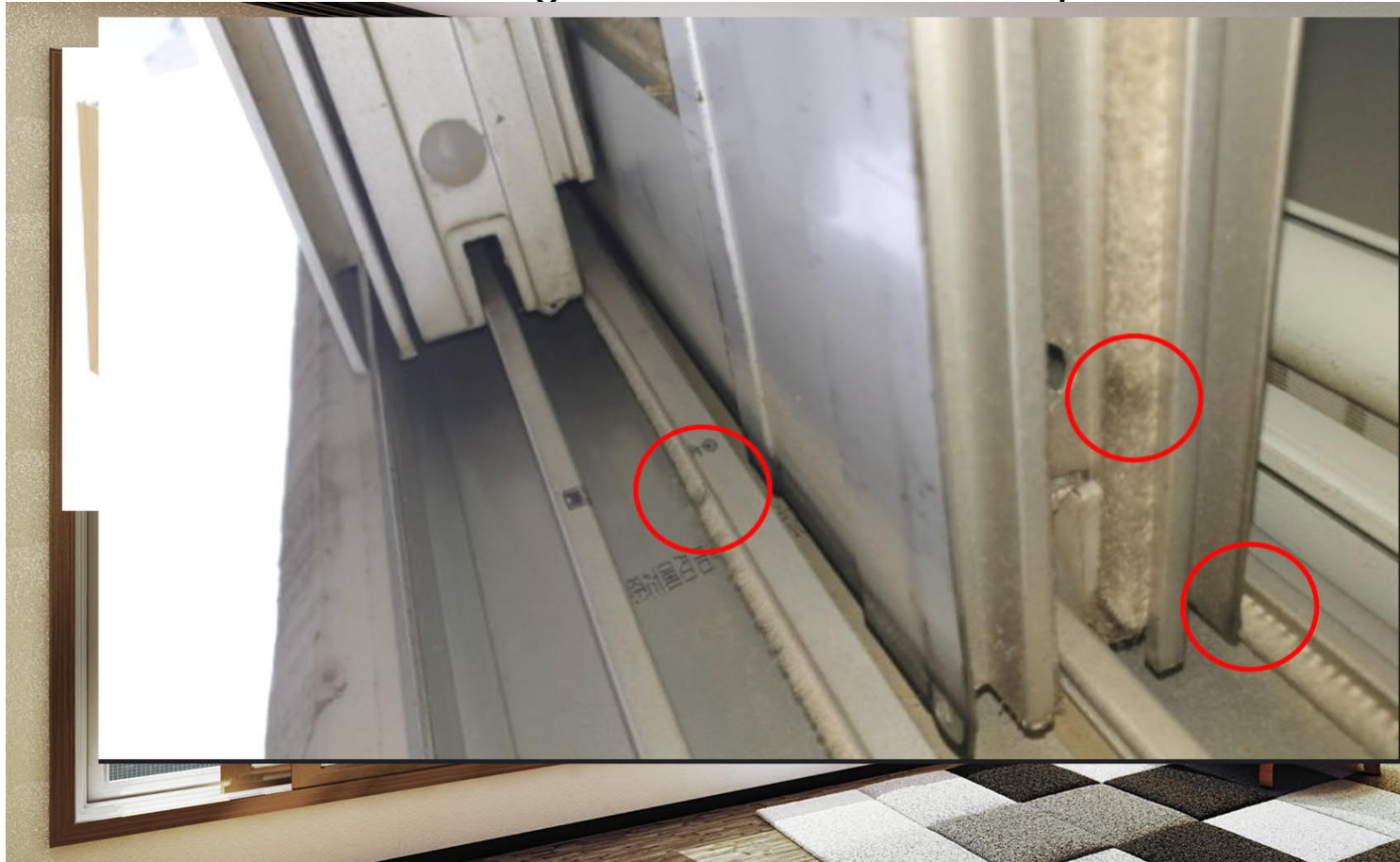


지40mm 조절식 롤러 사용



- Bilder aus Südkorea / Status quo South Korea
- Bürstendichtungen - und Luftdichtigkeit? / Brush gaskets and airtightness

Asien braucht massentaugliche Schiebelösungen / Asia needs sliding solutions as a mass product



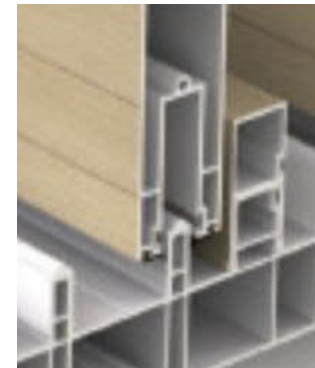
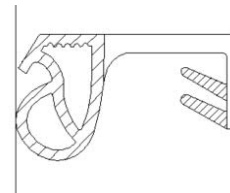
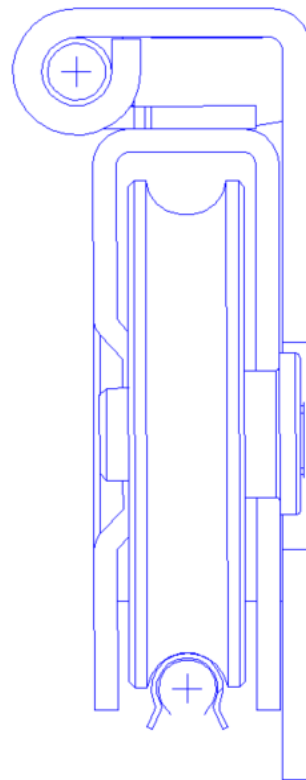
- Bilder aus Südkorea / Status quo South Korea
- Bürstendichtungen - und Luftdichtigkeit? / Brush gaskets and airtightness

Asien braucht massentaugliche Schiebelösungen / Asia needs sliding solutions as a mass product

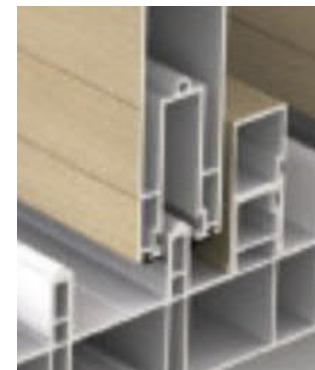
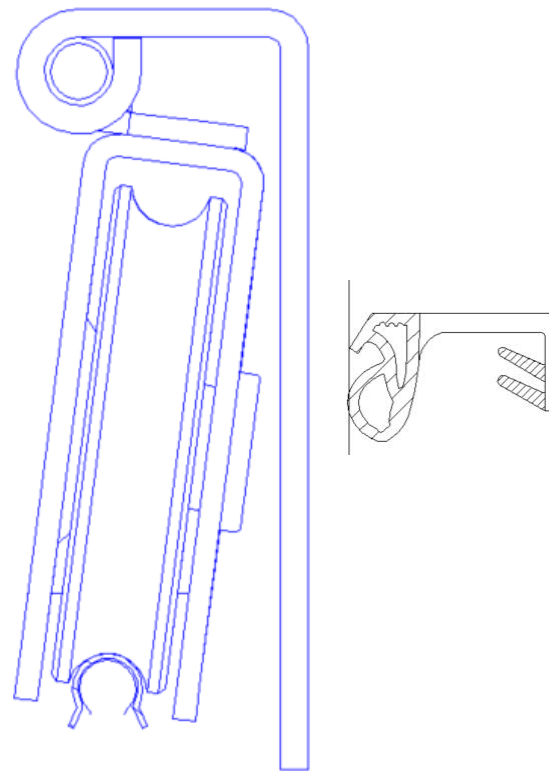


- Bilder aus Südkorea / Status quo South Korea
- Bürstendichtungen - und Luftdichtigkeit? / Brush gaskets and airtightness

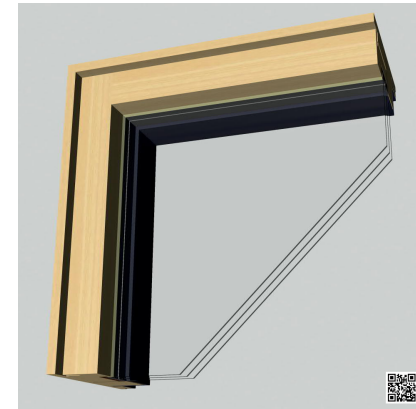
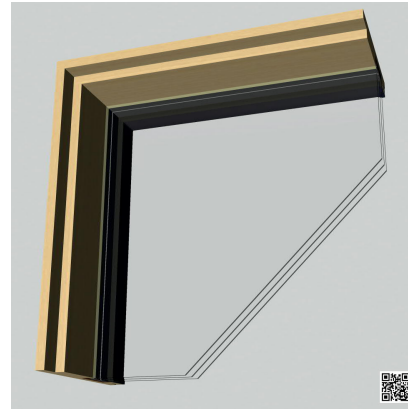
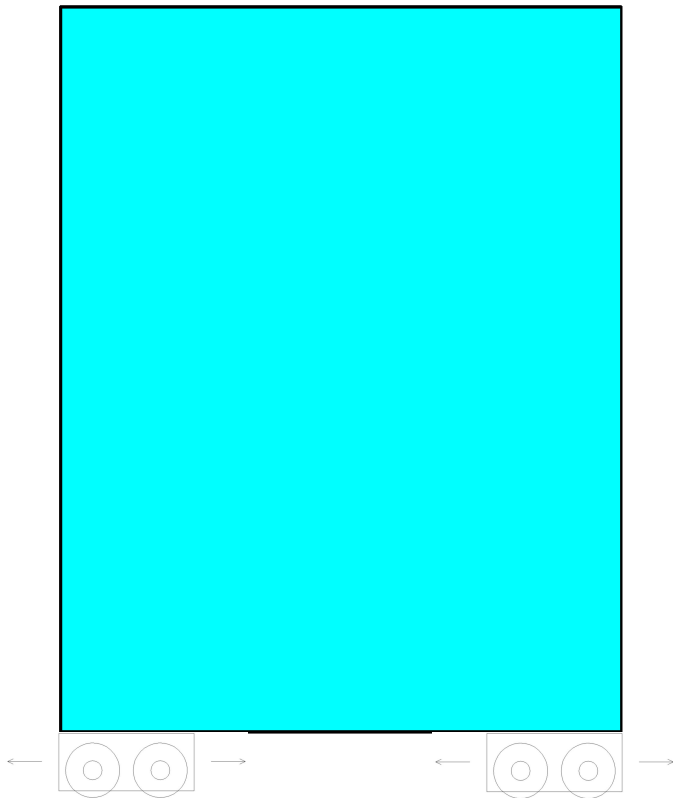
Wir brauchen eine neue Schiebetechnologie /
We need a new sliding technology



Wir brauchen eine neue Schiebetechnologie /
We need a new sliding technology



Die Schiebetüre als Glasscheibe auf Rädern / The sliding door as a pane on wheels

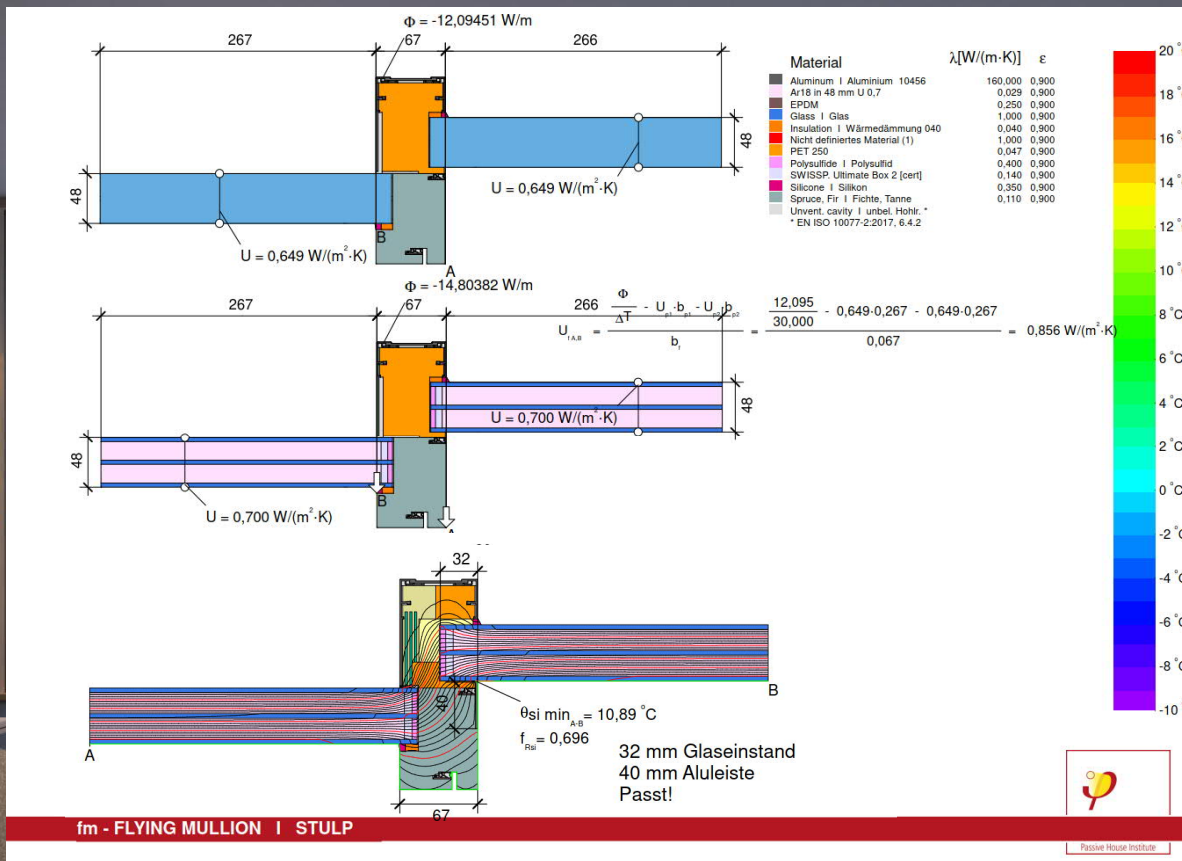


Einfachheit schafft Eleganz /
Simplicity creates elegance



Schönheit ist bei
unseren Produkten
eine absolute
Grundanforderung. /
Beauty is an
absolute basic
requirement for our
products.

Wärmestrom Pfosten / Heat flow of vertical post



Reduzierung der Außenoberfläche durch geringen Abstand der Glasscheiben / Reduction of the outer surface due to the small distance between the glass units

Varianten sind einfach zu rechnen. / Variants are easy to calculate.

Der Passivhausstandard ist auf dem richtigen Weg.
Our Passive House Standard is on the right track.
Jetzt mit einer weiteren wichtigen Komponente.
Additional component ahead.

Danke für Ihre Aufmerksamkeit!
Thanks for listening!



Comfort

Costs